



SB
S.B. ENTERPRISES
AN ISO 9001 : 2015 CERTIFIED CO.

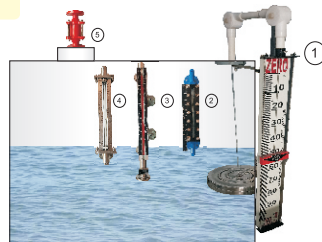
FLOW LEVEL SAFETY EQUIPMENTS



Typical Field Mounting of Instruments

Level Gauges for Liquids

- 1) Float & Board Gauge
- 2) Reflex Gauge
- 3) Magnetic level Gauge
- 4) Tubular level Gauge
- 5) Flame Arrestor



- Designed for all Process Applications
- Backed by over one decade of experience
- Widest & Efficient Range ability
- High Performance Resistance
- Consistency of Operation under adverse condition
- Our prompt mark of Sales Services

Manufacturer of:

- Rotameter
- Level Indicator
- Level Switches
- Strainer
- Manometer
- Sight Glass
- Double Window Sight Flow
- Breather Valve
- Flame Arrestor
- Safety Valves

SB
S.B. ENTERPRISES
AN ISO 9001 : 2015 CERTIFIED CO.

CONTACT PERSON:
Mr. Ashish Tiwari MOBILE: +91-99041 11187
ADDRESS: Plot No. K-1, 7706/2&3, G.I.D.C. Industrial Estate
Ankleshwar - 393002, Gujarat, India
PHONE: +91-2646-223664/220889
FAX: +91-2646-224533
EMAIL: sbenterprisesn71@yahoo.in
WEBSITE: www.sbenterpriseindia.com

INTRODUCTION

S. B. ENTERPRISES

Engineering Empowerment: Bringing forth a wide range of magnetic rotameters, low flow rotameter, glass tube rotameter, metal tube rotameter, rotameter, magnetic level indicator, manometers, level indicator, level switches, sight glasses, pipeline strainers, sight flow indicators, breather valves, flame arresters, strainers, etc.....

Know Us

Empowered with cutting edge technology as well as a team of experienced personnel.

S. B. Enterprises, are a one stop solution for all your engineering needs. Established in the year 1997, we have in a short span of time, carved a niche for ourselves across varied industries owing to the excellent quality and performance of our products.

Having gained a decade of experience in the industry, today we are known as an eminent manufacturer and supplier of magnetic rotameters, low flow rotameter, glass tube rotameter, Metal tube rotameter, rotameter, Magnetic level indicator, manometers, level indicator, manometers, level switches, sight glasses, pipeline strainers, sight flow indicators, breather valves, flame arresters, strainers, etc.

Our sole motive is to deliver the world's best range of products to our prestigious clients. The success story of the concern can well be attributed to its consistency in maintaining the highest levels of quality and customer satisfaction. It is indeed no wonder that today we boast of a huge clientele including companies from every state in India. We are now planning to expand our operation in many overseas regions as well.

COMPANY PROFILE

Quality Assurance

Our commitment to quality and customer satisfaction has always resulted in high quality products and fruitful gain. S. B. Enterprises' quality control department conducts rigorous quality checks such as raw material selection, chemical analysis, mechanical testing, failure analysis, corrosion testing, and so on to ensure that the finished products are at par with the international quality protocol and

ISO 9001:2008 standards.

Our team of adept quality personnel monitors each manufacturing step to develop flawless products which are high on quality and durability.

Our non-compromising attitude towards quality has helped us achieve consistent growth in the industry.

Modern Infrastructure

S. B. Enterprises boasts of a sophisticated infrastructure loaded with hi-tech machines and equipments. Handled by experienced and skilled workforce, our machines ensure efficient production. Our phenomenal success is attributed to our dedicated staff, which leaves no stone unturned in any aspect of the production process. Implementation of latest technology and continuous upgradation of machinery have helped us to keep abreast with the progressing industrial trends. Our well segregated production setup helps us meet the varied process related needs, right from designing of the products to their final finishing and polishing.

Our Esteemed Clients:

S. B. Enterprises has earned the faith of numerous clients throughout the nation. To name a few:



SAFETY INSTRUMENT

ORIFICE PLATES & FLANGE ASSEMBLIES (SBE - 119)



Orifice Flange Assemblies are supplied ready to install in pipelines complete with Studs, Nuts, Jack Bolts, Gaskets and Drain Plugs. Orifice Flanges are manufactured in broad variety of materials to ASTM Standards viz.

Flanges	CARBON STEEL / ASTM A105 / ASTM A182 / ASTM A350 / Ss304 / SS304L / SS316 / SS316L / PP / PTFE
Orifice Plate	SS304/SS304L/SS316/SS316L / MONEL / HAST ALLOY/PP/PTFE Other Material On Request
Studs & Nuts	MS/SS/ASTM A193 Gr. B7/A194 Gr. 2h

FLAME ARRESTERS (SBE - 121)



Flame Arrester are safety devices used to prevent external fire entering in to the tank or inside the pipe line & ducts & to prevent flame spreading from in to or out of plant & equipments flame arresters are normally installed on the end of the line or above the vessel, where hazardous gases are normally vented out. The internal element or flame bank is made of metal sheet, the gas is allowed to pass along with the element which prevent fire entering in process on the event of external fire sizing / designing can be done with reference to API - 2000. Flame bank is so designed that the pressure drop is negligible . In any process or plant which us flammable gas, or vapour that could

conceivably ignite flame, flame arresters must be used. To assist yours requirement the details such as the fluid, gas & vapour contains & tank size, apacity in ltr. pumping rates in & out from storage tank be specified, where the flame arresters are required. Available in sizes from: 1" to 12".

MACLEOD GAUGE (SBE - 124)



Suitable for measurement of pressures in the range of 10 mm to 10³ mm or 10³ mm of Hg. This convenient gauge is a modification of Macleod Gauge. This gauge eliminates the use of a movable reservoir of mercury, and also requires only about 12 cc of mercury for filling. The total size of this gauge is about 9"x6".

STRAINERS (SBE - 120)



Strainers is safety devices used to prevent external fire entering in to the tank or inside the pipe line & ducts & to prevent flame spreading from in to or out of plant & equipments flame arresters are normally installed on the end of the line or above the vessel, where hazardous gases are normally vented out. The internal element or flame bank is made of metal sheet, the gas is allowed to pass along with the element which prevent fire entering in process on the event of external fire sizing / designing can be done with reference to API - 2000. Flame bank is

so designed that the pressure drop is negligible . In any process or plant which us flammable gas that could conceivably ignite flame, flame arresters must be used. To assist yours requirement the details such as the fluid, gas & vapour contains & tank size, apacity in ltr. pumping rates in & out from storage tank be specified, where the flame arresters are required. It is used in process & chemical Industries. The range from 1.4" to 2". Screwed Connection & 1" to 14" in flanged connection

BREATHING VALVES (SBE - 123)



Industrial Breather Valves

The breather valves are extensively used for automatic venting and for conservation of losses due to evaporation. Breather valves minimizes the risk of fire, explosion and collapsing of tank by relieving automatically the dangerous pressure and vacuum in the tank due to any reason.

The pressure & vacuum function are combined in one fitting which is available in 2" to 12".

The standard body material are aluminum alloy and cast steel.

DOUBLE WINDOW DRIP TYPE SIGHT FLOW INDICATOR (SBE - 125)

Suitable for highly pressure & temperature these are all type mounted vertically & horizontally. Available in CI/CS/SS/304/316/PTFE



LEVEL MEASURING INSTRUMENT

MAGNETIC LEVEL INDICATOR (SBE - 106)



Side Mounted Magnetic Level Indicator & Top Mounted Magnetic Level Indicator Suitable for continuous level indication of highly corrosive, hazardous & fuming liquids under high press & temp float is equipped with alnico magnets moves up or down along with level increase or decrease this float magnets movement will be magnetically coupled to the follower outside the chamber which is enclosed in a glass tube one or two or four limit switches may be provided externally to the indicator these switches will change over their contacts as soon as the level sensed by the float increases or decreases above the set point.

Material of Guide Chamber	Ss304/ SS316/ PP / PVDF Teflon Linned
Material of Float	Ss304/ SS316/ PP / PVDF Teflon Linned
Range	0 to 4 Mtr
Press Rating	40 Kg/cm ²
Scale	M/C Engraved acrylic / Bakelite / Ss304 SS316 / ALU graduated in cm / mm
Accessories	Heating jacket
	High and Low alarm
	4 - 20ma transmitter

FLOAT & BOARD TYPE LEVEL INDICATOR (SBE - 108)



A totally new, reliable and accurate system for liquid level measurement in tall and overhead tanks.

Highly efficient and rugged in construction, this instrument is very suitable for large storage tanks for Water, Fire Water, DM Water, Oil, LSHS, Diesel, Lube Oil, Vegetable Oils,

Molasses, Silicates, Glucose, All Non-Hazard, Non- Pressurised tanks. As the liquid rises in the tank, the large float also goes up, in turn moving the pointer on the graduated scale.

Float	CS/SS.304/SS.316 PP/PVC/Teflon lined
Housing	Aluminium/PP etc.
Wire Housing	CS/SS.304/SS.316 PP/PVC/Teflon/Nylon
Pulley	Aluminium/PP/Nylon SS.316/PTFE/Glass

REFLEX TYPE LEVEL INDICATOR (SBE - 107)

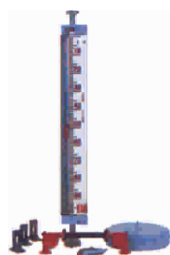


Principle of Operation
The liquid level is distinguished by the different brightness of the reflex glass is the media or in the stream/empty space. In fact where is liquid in contact with the glass, the incidental light is refracted to inside of the gauge and absorbed. Due to the above fact we get a black color indicating the level of liquid. But with the steam space above the liquid media appears very bright indicating the demarcation between liquid and empty space.

Customized suiting to the service (fluid) and temperature,
Available in SS 304/ SS 316/ pp/ CS etc

Liquid Velocity	C.S./S./304/S.S.316
Cover Plate	CS/MS
Glass	Toughened borosilicate
Pressure Rating	75kg/cm
Temperature	300°C
Range	0-3 Meter

VAPOUR SEAL TYPE MAGNETIC LEVEL INDICATOR (SBE - 109)



With rising liquid level in the tank, the float rises up taking the magnetic counterweight in the enclosure down. The counter weight being magnetic in nature couples with the indicator (red coloured) which moves in the glass tube and can be easily read against the calibrated scale to indicate the liquid level in the tank. This instrument being completely sealed and indicator mechanism being isolated from the moving parts, magnetically, it ensures complete sealing and prevents loss of pressure or vapour.

Float	CS/SS.304/SS.316 PP/PVC/Teflon lined
Housing	Aluminium/PP etc.
Wire Housing	CS/SS.304/SS.316 PP/PVC/Teflon
Pulley	Aluminium/PP/Nylon SS.316/PTFE/Glass
Temperature Rating & Pressure	20kg/cm/200°C

LEVEL MEASURING INSTRUMENT

TOP MOUNTED MAGNETIC LEVEL INDICATOR (SBE - 110)



Simple principle of mechanics and magnetism harnessed to offer an absolutely safe, reliable and trustworthy level indicator for dangerous and toxic liquids under high pressure and temperature.

Due to magnetic attraction, the magnet on the float stem and the magnetic follower are coupled and move in union. As the float moves along with the liquid, the follower also moves inside the glass tube, and the position of the follower can be read against the scale.

Liquids	Acids/Alkalies/Solvents/Oils Lubricants/Liquid Gases stored in Under ground or Over Ground Tanks
Density / Sp. gravity	Minimum 0.6
Viscosity	Upto 250 cp
Design Temperature	Up to 350°C
Design Pressure	Up to 7 Kg/cm ²
Tank Hight (Range)	Up to 3000 mm
Material of wetted Parts	MS/CS/SS304/SS304L/SS316/SS316L PTFE Lined SS/PVC/PP
Connection	Flanged to ASA/BS/DIN/Triclover Minimum Nozzle size required 4" NB for liquids below 0.8 Density

SIDE MOUNTED TUBULAR LEVEL INDICATOR (SBE - 112)

Tubular Level Gauge for visual liquid level observation is very common in process industry. It is a simple and reliable device for direct reading in atmospheric or pressurized tank applications. It is mounted parallel, along the side of tank. As the process level fluctuates, the level in the transparent glass tube changes accordingly and gives local liquid indication. This is a very simple instrument. It is flange mounted to the tank. As the liquid level rises in the tank, the liquid also rises inside the glass tube and one can see the liquid level in the tank. In this model the glass tube is enclosed in an enclosure which also carries a graduated scale. The liquid level in the gauge can be conveniently read against this scale.



Material of Wetted Parts	CS/SS304/SS316/PP/PVC/Teflon
Pressure Rating	10kg / cm
Glass Tube	Heavy Wall Borosilicate glass 19mm
Range	0-3 meter
Scale	M/C engraved on bakelite sheet graduated in cm
Features	• Isolation valves of CS/SS 304/PP

SIDE MOUNTED MAGNETIC LEVEL INDICATOR (SBE - 111)



As the liquid level rises in the tank, the float is lifted up due to buoyancy. The float moves inside a SS float chamber. External to this float chamber is a glass tube (MLI 2200)/indicating PVC magnetic ball assembly (RBMLI 2200) which carries the magnetic follower. Due to magnetic attraction, the magnet on the float and the magnetic follower are coupled and move in union. So as the float moves along with the liquid, the follower capsule also moves inside the glass tube (MLI 2200) and PVC magnetic ball changes its colour (RBMLI 2200), and the position of the follower capsule/magnetic ball can be read against the scale.

Material of Float	CS/SS304/SS316/PVC/PP/Teflon
Range	0-5 Meters
Pressure Rating	40kg/cm
Scale	M/C engraved on backlite anodised aluminium sheet graduated in cm
Features	• Low and High Level Alarms • 4-20mA transmitter • Digital Indicator
Material of wetted Parts	MS/CS/SS304/SS316/ PTFE Lined SS/PVC/PP/Teflon

TOP MOUNTED MAGNETIC LEVEL SWITCH (SBE - 113)



Suitable for automatic pump control & alarm Single & multi level float switches provide high, low & intermediate point level sensing in all types of storage tanks & receiver. Magnetic float switches are equipped with hermetically sealed reed switches, the reed switches are actuated by the magnetic field of magnet inside the float. The only moving parts of float is the float which will be reliable floating on the liquid surface.

Material of Wetted Parts	SS 304 / SS316 / PP / PVDF / Teflon
Pressure Rating	50kg / cm ²
Temp	150°C for Teflon 65°C for PP
Actuation	Snap action micro switch
Switch	230VAC
Casing	Weather proof / Explosion proof.

AIR HEADER (SBE - 126)



Air Header are fabricated from bar stock which are customized based on customers drawings. Air Header has been specifically designed for use on instrumentation, process and control systems, together with equipment employed in oil and gas, marine and shipping, chemical, chromatography, petroleum.

Connection	Flanged to ASA/BS/DIN/ Screwed BSP/NPT
Probe Material	SS304/SS304L/SS316/SS316L/ PTFE Lined

SIDE MOUNTED MAGNETIC LEVEL SWITCH (SBE - 115)



Suitable for level control tanks, vessels, boiler drums, can be used to get audio / visual alarm to operate valves pump. It consist of a fixed stem to which a cylindrical float is hinged & the float up & down along the liquid level. A permanent magnet hosed in the float actuates & de-actuates & hermetically sealed reed switches located in the stem opens as the liquid level rising or to close on falling liquid level depending on the mounting position.

Material of Wetted Parts	Ss304 / SS316 / PP / PVDF / Teflon
Differential	15mm to 60mm
Temp	150°C for Teflon 65°C for PP
Contact Rating	230V, AC 5 amp
Actuation	Snap action micro switch
Casing	Weather proof / Explosion proof.

U TUBE MANOMETER (SBE - 116)



A U Tube Manometer is a Pressure measuring instrument usually limited to measuring pressure near to atmosphere. Commonly used Liquids in Manometer are Water and Mercury.

Available in: Wall Mounted And Stand Mounted
Range : 50-0-50 to 4000 MM WC/Hg
Min. Div. : 1 MM WC/Hg

SINGLE LIMB MANOMETER (SBE - 117)

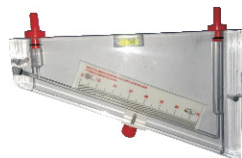


A U Tube Manometer is a Pressure measuring instrument usually limited to measuring pressure near to atmosphere. Commonly used Liquids in Manometer are Water and Mercury.

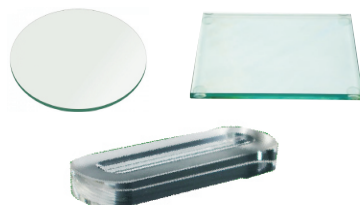
Available in: Wall Mounted And Stand Mounted with level adjustment screws
Range : 0 to 4000 MM WC/Hg
Min. Div. : 1 MM WC/Hg

ACRYLIC BODY MANOMETERS (SBE - 118)

The Single Tube Well type Acrylic Body Manometers are applicable to measure vacuum in terms of mm Hg. abs. / torr. at last stage available with catch pot and isolation valve.



TOUGHENED GLASS



FLOW MEASURING INSTRUMENT

METAL TUBE ROTAMETER (SBE - 101)

We are one of the leading Manufacturer & Supplier of Metal Tube Rotameter. Metal Tube Rotameter is Suitable for measurement of flow rate of liquid, gases using tapered borosilicate glass tube having press rating of 10Kg / Cm2 temp at 180c



Material of Wetted Parts	Ss304 / SS316 / PP / PVC / Teflon
Line Size	25mm NB To 100mm NB
F to F Distance	300mm
Connections	Flanged
Packing	Teflon
Rotameter Ranges	1000 to 40000 LPH of water at ambient temp 2.5 to 1250 NM3 / Hr of air at NPT
Rotameter Accuracy	± 1.5% full scale reading

BY PASS ROTAMETER (SBE - 102)



Suitable for measuring flow rates in 50 NB & above pipeline. Available in a variety of materials, carrier rings, impulse piping and rotameter as flow indicator. Design Standard conforms to ISO 5167/BS 1042. This is basically an online

Fluid	Liquids, Gases & Steam
Density / Sp. Gravity	Up to 1.85
Viscosity	Below 10 cp
Design Temperature	Up to 150°C
Design Pressure	Up to 13 Kg/cm ² in case of SDG Series Up to 25 Kg/cm ² in case of SDMT Series
Line Size	50 NB to 450 NB

LOW FLOW ROTAMETER (SBE - 104)



We are one of the leading Manufacturer & Supplier of Low flow Rotameter. Low Flow Rotameter is Suitable for measurement of flow rate of translucent opaque liquid, gases under high temp & pressure.

Material of Wetted Parts	CS / SS304 / SS316 / PP / PVC Teflon Limited.
Line Size	15mm MB to 150mm NB
Flow Range	160LPH Hr of water at ambient temp. 20 - 6000 Nm3 / Hr of air at NTP
Connection	Screwed / Flanged bottom to top Rear entry
Rotameter Accuracy	± 1% full scale reading

GLASS TUBE ROTAMETER (SBE - 103)

It is an instrument used to measure instant flow rate of Liquids and Gases. It is installed in the pipe line vertically upward with flanged or screwed connection.



Fluid	Liquids & Gases
Density / Sp. Gravity	Up to 2.95
Viscosity	Up to 200 cp
Design Temperature	Up to 150°C
Design Pressure	Up to 15 Kg/cm ² Depending on Model
Measuring Range	2.5 to 40,000 LPH of Water/Liquid & 0.1 to 750 Nm ³ /hr of Air/Gas at NTP
Line Size	Up to 4" NB
Available Materials	MS/CS/SS304/SS304L/SS316/SS316L/ PTFE lined MS or SS
Connection	Flanged to ASA/BS/DIN/ Tri clover Standard Screwed to BSP/NPT(M/F)
Accuracy	±2% of FSD & ±1.5% on request

ACRYLIC BODY ROTAMETER (SBE - 105)



It is an instrument used to measure instant flow rate of Liquids and Gases and are commonly used for flow measurement.

Fluid	Liquids & Gases
Density / Sp. Gravity	Up to 1.85
Viscosity	Up to 100 cp
Design Temperature	Up to 35°C
Design Pressure	Up to 5 Kg/cm ²